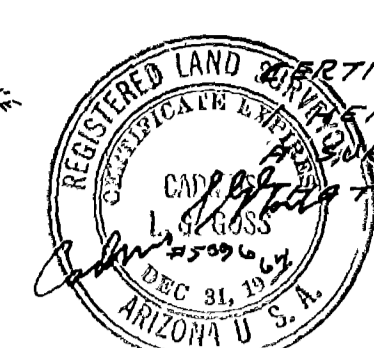
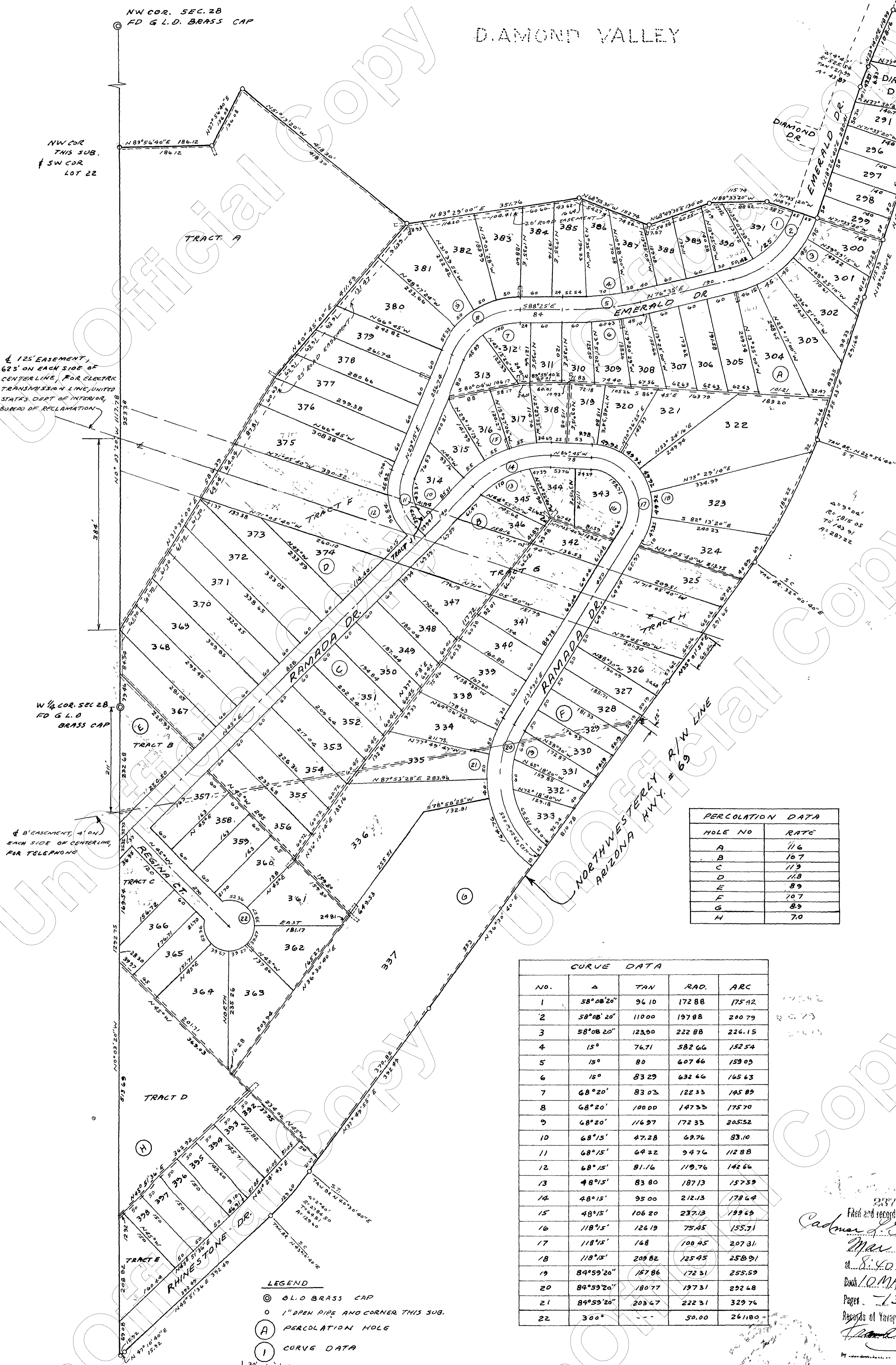


DIAMOND VALLEY



STATE OF ARIZONA  
COUNTY OF MARICOPA } 55  
ON THIS 14<sup>TH</sup> DAY OF JANUARY 1964, BEFORE ME, PERSONALLY APPEARED Cadman T. G. Sosa AND Allen H. Brown, WHO ACKNOWLEDGED THEMSELVES TO BE THE VICE PRESIDENT AND ASSISTANT SECRETARY OF THE UNION TITLE COMPANY, AN ARIZONA CORPORATION, AS TRUSTEE, AND THAT THEY, AS SUCH OFFICERS, BEING AUTHORIZED SO TO DO EXECUTED THE FOREGOING INSTRUMENT FOR THE PURPOSES THEREIN CONTAINED, BY SIGNING THE NAME OF THE CORPORATION BY THEMSELVES AS SUCH OFFICERS.

IN WITNESS WHEREOF I HERETO SET MY HAND AND OFFICIAL SEAL, MY COMMISSION EXPIRES. 9-29-1967 Marie J. Biller NOTARY PUBLIC



SCALE 1" = 100'

DEDICATION:

KNOW ALL MEN BY THESE PRESENTS THAT THE UNION TITLE COMPANY, AN ARIZONA CORPORATION, AS TRUSTEE, HAS SUBDIVIDED THE LAND AS SHOWN PLATTED HEREON, TO BE KNOWN AS "DIAMOND VALLEY NO. 2" AND MORE PARTICULARLY DESCRIBED AS FOLLOWS: BEGINNING AT THE WEST 1/4 COR. OF SEC 28, T-14-N, R-1-W, YAVAPAI COUNTY, ARIZONA, THENCE ALONG THE WEST LINE OF SAID SEC 28, S. 0° 03' 20" E. 1292.75' TO THE NORTHWESTERLY R/W LINE OF HWY # 89, THENCE ALONG SAID R/W LINE, N. 87° 01' 40" E. 15.92', THENCE N. 45° 51' 36" E. 392.49', THENCE ON A CURVE TO THE LEFT WITH A  $\Delta$  2° 40', R= 2784.50', T= 64.81', A= 123.60', THENCE N. 37° 49' 55" E. 392.49', THENCE N. 36° 30' 40" E. 810.78', THENCE N. 35° 01' 58" E. 291.65', THENCE ON A CURVE TO THE LEFT WITH  $\Delta$  9° 04', R= 1815.05', T= 143.91', A= 287.22', THENCE N. 19° 55' 23" E. 291.64', THENCE N. 18° 26' 40" E. 115.33' TO THE SOUTHEASTERLY CORNER OF DIAMOND VALLEY SUB., THENCE N. 18° 26' 40" E. 265.00', THENCE ON A CURVE TO THE RIGHT WITH A  $\Delta$  3° 42' 21", R= 2071.67', T= 670.2', A= 139.00', THENCE N. 55° 41' 49" W. 149.07', THENCE S. 23° 14' 10" W. 114.99', THENCE ON A CURVE TO THE LEFT WITH A  $\Delta$  4° 47', R= 5525.54', T= 21.99', A= 93.87', THENCE S. 18° 26' 40" W. 280.41', THENCE N. 71° 33' 20" W. 108.77', THENCE N. 88° 33' 20" W. 115.74', THENCE S. 68° 49' 30" W. 130.00', THENCE N. 68° 55' 30" W. 152.74', THENCE S. 68° 29' 00" W. 351.76', THENCE N. 51° 13' 20" W. 418.30', THENCE S. 27° 56' 40" W. 136.08', THENCE S. 89° 56' 40" W. 186.12' TO THE WEST LINE OF SAID SEC. 28, THENCE S. 0° 03' 20" E. 1117.78' TO THE POINT OF BEGINNING, AND HEREBY DECLARES THAT THIS PLAT SETS FORTH THE LOCATION AND GIVES THE DIMENSIONS OF THE LOTS AND STREETS CONSTITUTING SAME AND THAT EACH LOT AND STREET SHALL BE KNOWN BY THE NUMBER OR NAME GIVEN EACH RESPECTIVELY ON SAID PLAT AND HEREBY CONSENT AND HEREBY DEDICATE TO THE USE OF THE PUBLIC FOREVER ALL STREETS SO DESIGNATED ON THIS PLAT WITH A 5' AERIAL OR OVERHEAD EASEMENT ON EACH SIDE OF SAID STREET ON LOT SIDE FOR CROSS ARMS AND WIRES WITHIN THE BOUNDARIES OF THE SUBDIVISION ONLY.

IN WITNESS WHEREOF, UNION TITLE COMPANY, AS TRUSTEE, HAS HERETO CAUSED ITS CORPORATE NAME TO BE SIGNED AND ITS CORPORATE SEAL TO BE AFFIXED, AND THE SAME TO BE ATTESTED BY THE SIGNATURES OF Cadman T. G. Sosa, ITS VICE PRESIDENT, AND Allen H. Brown, ITS ASSISTANT SECRETARY, HERETO DULY AUTHORIZED.

BY: Cadman T. G. Sosa VICE PRESIDENT  
ATTEST: Allen H. Brown ASSISTANT SECRETARY

PERCOLATION DATA	
HOLE NO	RATE
A	116
B	107
C	119
D	118
E	89
F	70.7
G	89
H	70

CURVE DATA				
NO.	$\Delta$	TAN	RAD.	ARC
1	58° 08' 20"	94.10	172.88	175.42
2	58° 08' 20"	110.00	197.88	200.79
3	58° 08' 20"	123.00	222.88	224.15
4	15°	76.71	582.66	152.54
5	15°	80	607.66	159.09
6	15°	83.29	632.66	165.63
7	68° 20'	83.03	122.33	145.89
8	68° 20'	100.00	147.33	175.70
9	68° 20'	116.97	172.33	205.52
10	68° 15'	47.28	69.76	83.10
11	68° 15'	64.22	94.76	112.88
12	68° 15'	81.16	119.76	142.66
13	48° 15'	83.80	187.13	157.39
14	48° 15'	95.00	212.13	178.64
15	48° 15'	106.20	237.13	199.69
16	118° 15'	126.19	75.45	155.71
17	118° 15'	148	100.45	207.31
18	118° 15'	209.82	125.45	258.91
19	84° 59' 20"	157.86	172.31	255.59
20	84° 59' 20"	180.77	197.31	292.68
21	84° 59' 20"	203.67	222.31	329.76
22	300°	--	50.00	26.180

APPROVALS:

I HEREBY CERTIFY THAT THIS PLAT WAS APPROVED BY THE BOARD OF SUPERVISORS OF YAVAPAI COUNTY, ARIZONA ON THIS 2ND DAY OF MARCH, 1964

John L. Smith CHAIRMAN  
Joseph B. Sarris COUNTY ENGINEER

Ralph A. Archer 2-27-64  
COUNTY SANITARIAN

Filed and recorded at request of  
Cadman T. G. Sosa  
Mar 3 A.D. 1964  
at 8:40 a.m. of Book 10 MAPS & PLATS  
Page 13  
Records of Yavapai County, Arizona  
Cadman T. G. Sosa  
County Recorder

DIAMOND VALLEY NO. 2

LOTS 290, 291, 296 THRU 338  
BEING A SUBDIVISION OF A PORTION OF THE W 1/2 OF SECTION 28, T-14-N, R-1-W, G.5 & R.8 M. AND A REPLAT OF LOTS 290, 291, 292, 296 THRU 299, DIAMOND VALLEY SUB., YAVAPAI CO., ARIZONA

DESERT SURVEYORS, INC  
930 W SCHUMPER DR  
TUCSON, ARIZONA  
SCALE 1" = 100'  
FEBRUARY, 1964

NW COR. SEC. 28  
FD G.L.O. BRASS CAP

NW COR. THIS SUB.  
SW COR. LOT 22

1/2" EASEMENT, 625' ON EACH SIDE OF CENTERLINE FOR ELECTRIC TRANSMISSION LINE, UNITED STATES DEPT. OF INTERIOR, BUREAU OF RECLAMATION

W 1/4 COR. SEC 28  
FD G.L.O. BRASS CAP

1/2" EASEMENT, 4' ON EACH SIDE OF CENTERLINE FOR TELEPHONE

- LEGEND
- ⊙ G.L.O. BRASS CAP
  - 1" OPEN PIPE AND CORNER THIS SUB.
  - (A) PERCOLATION HOLE
  - (C) CURVE DATA
  - ANCHOR EASEMENTS
  - 1/2" EASEMENT WITH 2' ON EACH SIDE OF INTERIOR LOT LINE
  - 4' EASEMENT ON LOT SIDE OF BOUNDARY

SEAL

SEAL

SEAL

SEAL