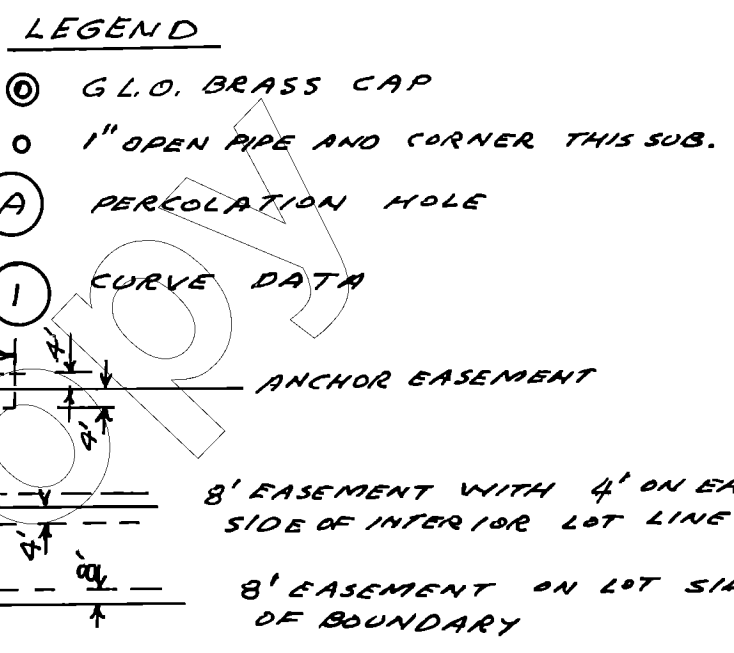
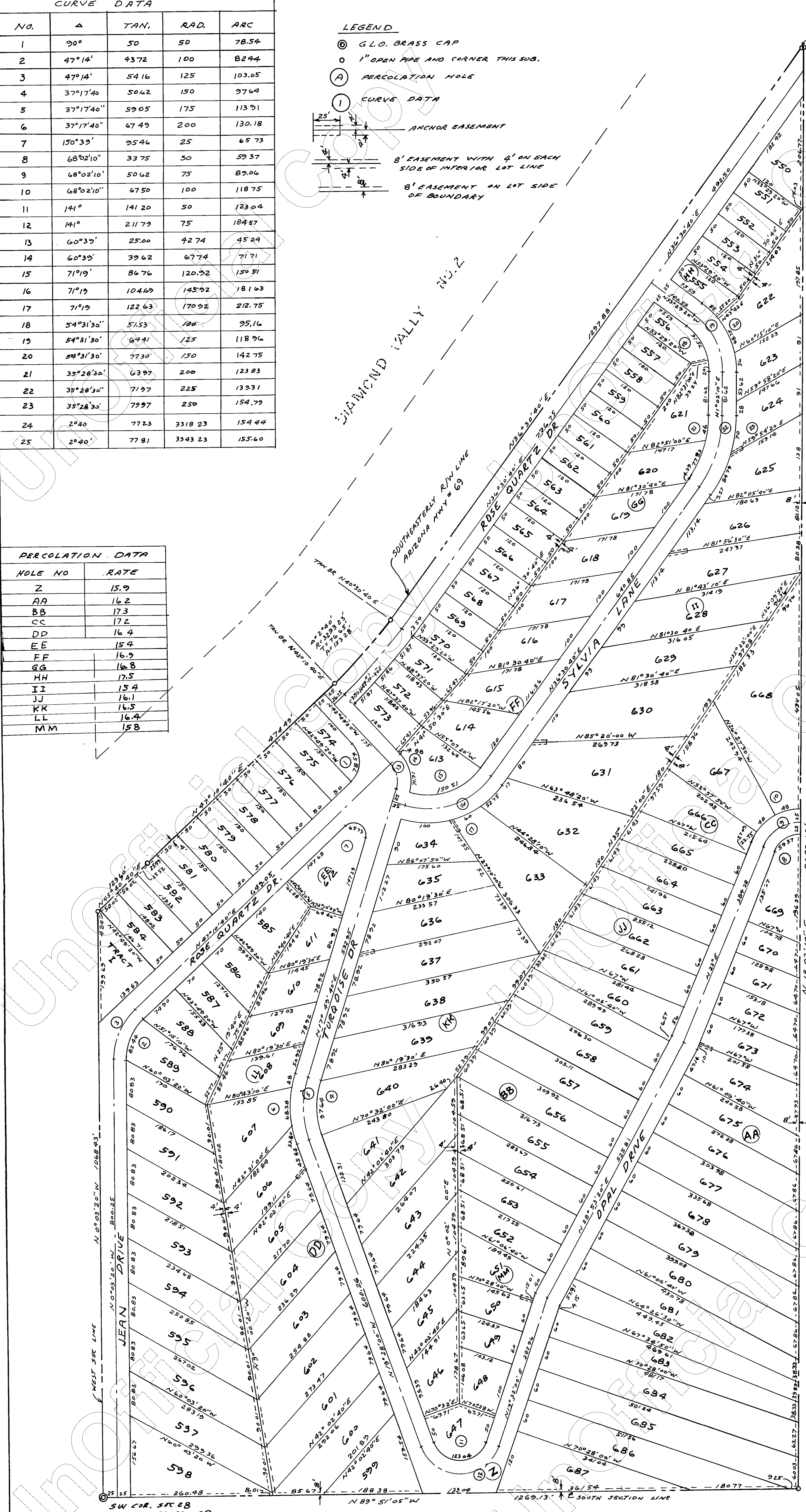


CURVE DATA				
NO.	A	TAN.	RAD.	ARC
1	90°	50	50	78.54
2	47°14'	43.72	100	82.44
3	47°14'	54.16	125	103.05
4	37°17'40"	50.42	150	97.64
5	37°17'40"	59.05	175	113.91
6	37°17'40"	67.49	200	130.18
7	150°39'	95.44	25	65.73
8	68°02'10"	33.75	50	59.37
9	68°02'10"	50.62	75	89.06
10	68°02'10"	67.50	100	118.75
11	141°	141.20	50	123.04
12	141°	211.79	75	184.87
13	60°39'	25.00	42.74	45.24
14	60°39'	39.62	67.74	71.71
15	71°19'	86.76	120.52	150.31
16	71°19'	104.69	145.92	181.63
17	71°19'	122.63	170.92	212.75
18	54°31'30"	51.53	100	95.16
19	54°31'30"	69.41	125	118.96
20	54°31'30"	77.30	150	142.75
21	35°28'30"	63.97	200	123.83
22	35°28'30"	71.97	225	133.31
23	35°28'30"	79.97	250	154.79
24	2°40'	77.23	3318.23	154.44
25	2°40'	77.81	3343.23	155.60

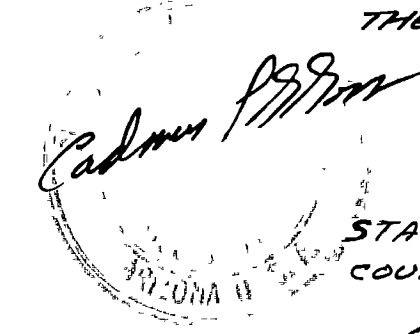


PERCOLATION DATA

HOLE NO	RATE
Z	15.9
AA	16.2
BB	17.3
CC	17.2
DD	16.4
EE	15.4
FF	16.9
GG	16.8
HH	17.5
II	15.4
JJ	16.1
KK	16.5
LL	16.4
MM	15.8



CERTIFICATION OF SURVEY:
I HEREBY CERTIFY THAT THIS PLAT REPRESENTS A SURVEY MADE UNDER MY DIRECTION AND THAT THE CORNERS HAVE BEEN SET AS SHOWN.



Cadmus J. J. J.
REGISTERED LAND SURVEYOR

STATE OF ARIZONA }
COUNTY OF MARICOPA } 55

ON THIS 27th DAY OF OCTOBER, 1964, BEFORE ME, PERSONALLY APPEARED JOHN D. KELLER AND GRIFFITH H. MORGAN, WHO ACKNOWLEDGED THEMSELVES TO BE THE VICE-PRESIDENT AND ASSISTANT SECRETARY OF THE AMERICAN TITLE & TRUST COMPANY AN ARIZONA CORPORATION, AS TRUSTEES, AND THAT THEY, AS SUCH OFFICERS, BEING AUTHORIZED SO TO DO EXECUTED THE FOREGOING INSTRUMENT FOR THE PURPOSES THEREIN CONTAINED, BY SIGNING THE NAME OF THE CORPORATION, AS TRUSTEE, BY THEMSELVES AS SUCH OFFICERS. IN WITNESS WHEREOF I HERETO SET MY HAND AND OFFICIAL SEAL.

2-7-67

St. J. Smith
NOTARY PUBLIC



SCALE 1"=100'

DEDICATION:

KNOW ALL MEN BY THESE PRESENTS: THAT THE AMERICAN TITLE & TRUST COMPANY, AN ARIZONA CORPORATION, AS TRUSTEE, HAS SUBDIVIDED THE LAND AS SHOWN PLATTED HEREON, TO BE KNOWN AS "DIAMOND VALLEY NO. 4" AND MORE PARTICULARLY DESCRIBED AS FOLLOWS:
BEGINNING AT THE SOUTHWEST COR. OF SEC 28, T-14-N, R-1-W, YAVAPAI COUNTY, ARIZONA, THENCE ALONG THE WEST SECTION LINE N. 0°03'20"W, 1068.43' TO THE SOUTHEASTERLY R/W LINE OF ARIZONA HWY. NO. 89, THENCE N. 45°40'40"E, 129.60', THENCE N. 87°10'40"E, 474.49', THENCE ON A CURVE TO THE LEFT WITH A Δ OF 2°40', R = 3293.23', T = 74.65', A = 153.28', THENCE N. 36°30'40"E, 1297.88', THENCE N. 89°05'40"E, 2.73', THENCE S. 01°02'10"W, 2642.63', THENCE N. 89°51'05"W, 1269.13' TO THE POINT OF BEGINNING, AND HEREBY DECLARES THAT THIS PLAT SETS FORTH THE LOCATION AND GIVES THE DIMENSIONS OF THE LOTS AND STREETS CONSTITUTING SAME AND THAT EACH LOT AND STREET SHALL BE KNOWN BY THE NUMBER OR NAME GIVEN EACH RESPECTIVELY ON SAID PLAT AND HEREBY CONSENT AND HEREBY DEDICATES TO THE USE OF THE PUBLIC FOREVER ALL STREETS SO DESIGNATED ON THIS PLAT WITH A 5' AREAL OR OVERHEAD EASEMENT ON EACH SIDE OF SAID STREET ON LOT SIDE FOR CROSSARMS AND WALLS WITHIN THE BOUNDARIES OF THE SUBDIVISION ONLY.

IN WITNESS WHEREOF: AMERICAN TITLE & TRUST COMPANY, AS TRUSTEE, HAS HERETO CAUSED ITS CORPORATE NAME TO BE SIGNED AND ITS CORPORATE SEAL TO BE AFFIXED AND THE SAME TO BE ATTESTED BY THE SIGNATURES OF JOHN D. KELLER, ITS VICE-PRESIDENT, AND GRIFFITH H. MORGAN, ITS ASSISTANT SECRETARY, HERETO DULY AUTHORIZED.

AMERICAN TITLE & TRUST COMPANY, AS TRUSTEE

By: John D. Keller
VICE-PRESIDENT

By: Griffith H. Morgan
ASSISTANT SECRETARY

APPROVALS:

I HEREBY CERTIFY THAT THIS PLAT WAS APPROVED BY THE BOARD OF SUPERVISORS OF YAVAPAI COUNTY, ARIZONA ON THIS

2 DAY OF NOV., 1964

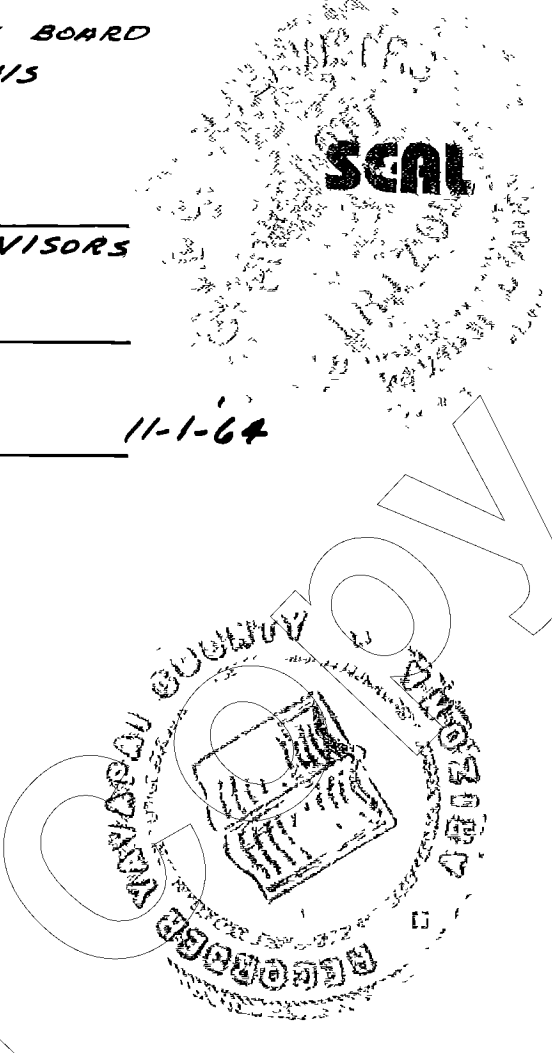
John J. Smith
CHAIRMAN

Clara J. Smith
CLERK, BOARD OF SUPERVISORS

Joseph B. Savits
COUNTY ENGINEER

Ralph O. Archer
COUNTY SANITARIAN 11-1-64

Filed and recorded at request of
Diamond Valley, Inc.
Nov. 9, 1964
at 12:55 o'clock P.M.
Book 10 MAPS & PLATS
Page 72
Desert Surveyors, Inc.
Frank C. Jowers
County Recorder



DIAMOND VALLEY NO. 4

LOTS 550 THRU 687
BEING A SUBDIVISION OF A PORTION OF THE W 1/2 OF THE SW 1/4, SECTION 28, T-14-N, R-1-W, G & S.R. 6M, YAVAPAI COUNTY, ARIZONA

DESERT SURVEYORS, INC.
2939 W. BUTLER DR
PHOENIX, ARIZONA

SCALE 1"=100'
OCTOBER, 1964